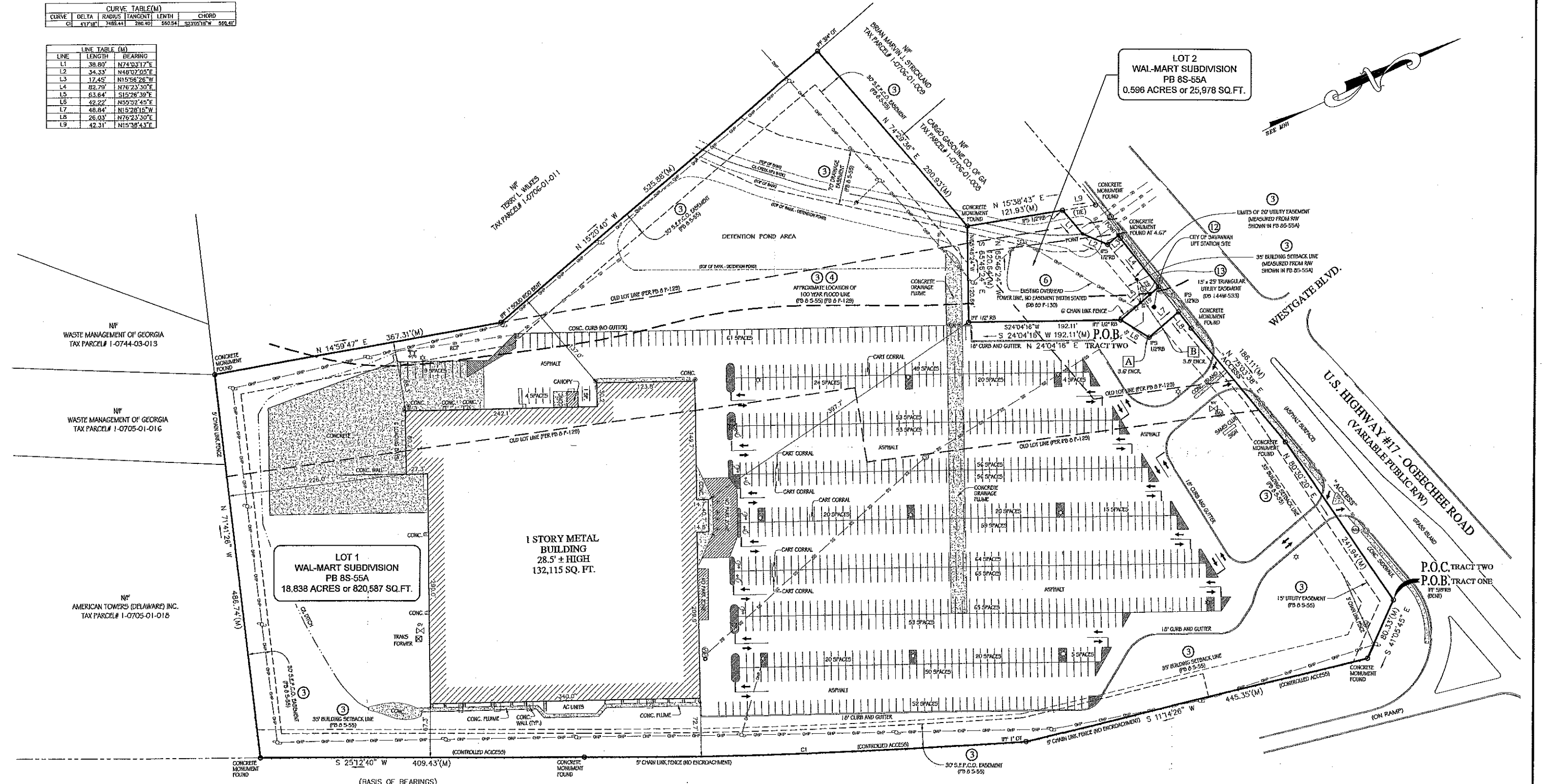


| CURVE TABLE (M) | | | | |
|--------------------|---------|---------|---------|--------|
| CURVE | DELTA | RADIUS | TANGENT | CHORD |
| C1 | 47.718° | 2488.44 | 286.40 | 560.54 |
| S2330518" W 560.41 | | | | |

| LINE TABLE (M) | | |
|----------------|--------|-------------|
| LINE | LENGTH | BEARING |
| L1 | 38.80' | N74°03'17"E |
| L2 | 34.33' | N48°02'05"E |
| L3 | 17.45' | N15°58'28"W |
| L4 | 92.79' | N76°23'30"E |
| L5 | 63.64' | S15°28'39"E |
| L6 | 42.22' | N55°52'45"E |
| L7 | 46.84' | N15°28'15"W |
| L8 | 26.03' | N76°23'30"E |
| L9 | 42.31' | N15°38'43"E |



LOT 2
WAL-MART SUBDIVISION
PB 8S-55A
0.596 ACRES or 25,978 SQ.FT.

LOT 1
WAL-MART SUBDIVISION
PB 8S-55A
18.838 ACRES or 820,587 SQ.FT.

1 STORY METAL
BUILDING
28.5' ± HIGH
132,115 SQ. FT.

WILLIAM F. LYNES PARKWAY (INTERSTATE 516)
300' PUBLIC R/W (CONTROLLED ACCESS HIGHWAY)

PROJECT NAME: WAL-MART STORES, INC. STORE #8202 PROJECT No.: 1045-06-0952
ADDRESS: 3609A OGEECHEE ROAD CITY: SAVANNAH STATE: GEORGIA

FOR INQUIRIES CONCERNING THIS SURVEY CONTACT:
6593 COMMERCE COURT - SUITE 100
WARRENTON, VIRGINIA 20187
PHONE: (640) 428-3560
FAX: (640) 428-3560

MKA associates, Inc.
A National Land Services Group

BARRETT
SURVEYING GROUP
tel. 864-834-3732 fax 864-834-3079
223-A North Foinsett Highway
Travelers Rest, SC 29690
www.barrettsurveying.com

